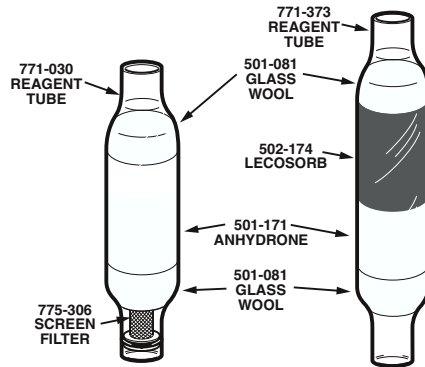
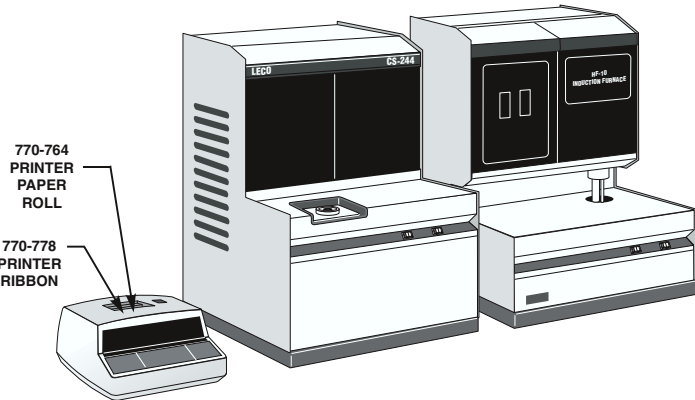
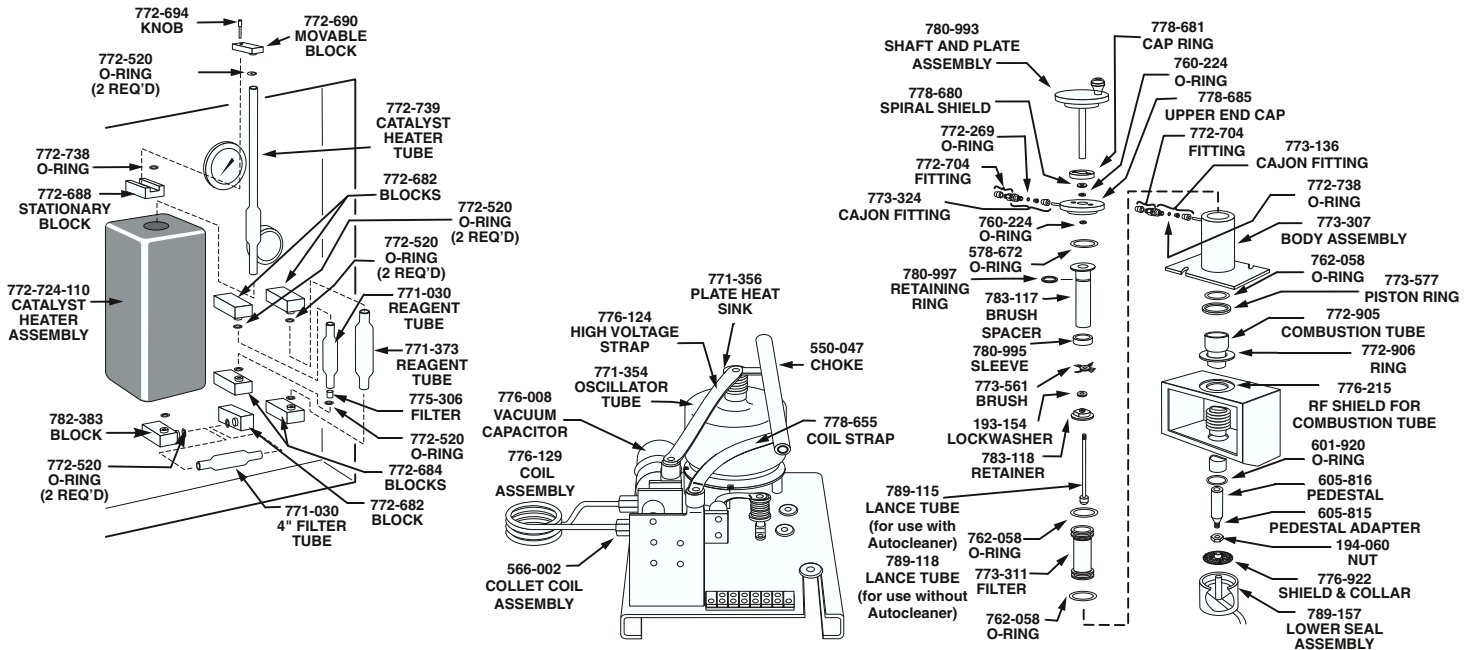




CS-244/344, IR-212/312 and IR-232/332 Consumables & Spares Reference Card

OBSOLETE—No further updates will be available.



COMBUSTION SUPPLIES

- 528-018 Ceramic Crucible 1000/box
- 528-050 Ceramic Crucible 500/box; bags of 50 each
- 773-561 Cleaning Brush
- 772-905 Combustion Tube, requires a 601-920 Silicone Rubber Ring Seal, 762-058 O-ring, and 772-906 Teflon Support Ring
- 501-082 Combustion Tube Cleaning Brush
- 776-234 Dust Box Filter, 10 micron
- 776-095 Dust Eject Tube
- 776-129 Induction Coil
- 772-381 Lance Cleaning Wire
- 773-311 Screen Filter, requires two (2) 762-058 O-rings
- 605-816 Silicon Nitride Combustion Pedestal, ideal for low carbon analysis, requires 605-814 Pedestal Assembly with: 194-060 Hex Nut, 605-815 Adapter Support, 776-922 Shield and Collar

ACCELERATORS

- 501-263 Copper Metal Accelerator 1.36 kg (3 lb.) bottle
- 501-640 Copper Metal Accelerator 9 kg (20 lb.) container
- 502-231 High Purity Iron Accelerator 454 g (1 lb.) bottle
- 501-077 Iron Chip Accelerator 0.9 kg (2 lb.) bottle
- 763-467 Iron Chip Accelerator 11.35 kg (25 lb.) container
- 502-297 LECOCEL® 13.6 kg (30 lb.) container
- 763-026 LECOCEL® 13.6 kg (30 lb.) container
- 763-266 LECOCEL® 2.27 kg (5 lb.) bottle
- 502-173 LECOCEL® II HP 750 g (1.7 lb.) bottle
- 501-008 LECOCEL® II 2.27 kg (5 lb.) bottle
- 763-027 LECOCEL® III 13.6 kg (30 lb.) container
- 763-263 LECOCEL® III 2.27 kg (5 lb.) bottle

Created with

See reverse side for contact information

CATALYSTS AND REAGENTS

501-171	Anhydrone 454 g (1 lb.) bottle
764-098	Cellulose 454 g (1 lb.) package
501-081	Glass Wool 454 g (1 lb.) box
502-174	Lecosorb 500 g bottle, 20–30 mesh
502-176	Lecosorb 500 g bottle, 8–20 mesh
501-587	Platinum/Silica 15 g bottle, Catalyst

REAGENT TUBES

601-065	Glass Tube, requires two (2) 772-520 O-rings for sealing
771-030	Glass Tube, requires two (2) 772-520 O-rings for sealing
771-373	Glass Tube, requires two (2) 772-520 O-rings for sealing
601-064	Quartz Catalyst Tube, requires two (2) 772-520 O-rings for sealing, and a 772-738 O-ring for the removable block
772-739	Quartz Catalyst Tube, requires two (2) 772-520 O-rings for sealing, and 772-738 O-ring to seal the removable block

OPERATION ACCESSORIES

761-929	Crucible Tongs
768-980	Balston Filter
775-307	Filter Removal Tool
775-306	10 micron Mesh Filter
503-032	Glass Accelerator Scoop
773-579	Metal Accelerator Scoop
764-078	One gram Weight
770-764	Paper Roll
770-778	Ribbon and Spool Assembly
760-138	Sample Tweezers, Straight
501-241	Silicone Vacuum Grease 5.3 oz. package

CALIBRATION SAMPLES

STEEL PINS (1 g pin–454 gram/bottle)

Part No.	% Carbon	% Sulfur
501-674	0.015–0.035	0.005–0.025
501-675	0.050–0.080	0.005–0.025
501-676	0.09–0.15	0.005–0.025
501-677	0.30–0.40	0.005–0.025
501-678	0.50–0.60	0.005–0.025
501-679	0.85–1.00	0.005–0.025

STEEL RINGS (1 g ring–454 gram/bottle)

Part No.	% Carbon	% Sulfur
501-501	0.0200–0.0400	0.005–0.030
501-502	0.04–0.10	0.005–0.030
501-503	0.10–0.25	0.005–0.030
501-504	0.25–0.50	0.005–0.030
501-505	0.50–0.80	0.005–0.030
501-506	0.80–1.00	0.005–0.030
502-148	0.0050–0.0100	0.010–0.030
502-265	0.050–0.065	0.280–0.365
502-271	0.030–0.080	0.150–0.250
502-280	—	0.075–0.150
502-364	0.80–1.0	—

CALIBRATION SAMPLES (cont'd)

ORE (Drill Tailings) (25 g/bottle)

Part No.	Type	% Carbon	% Sulfur
502-318		0.50–0.55	0.35–0.40
502-319		1.35–1.40	1.45–1.55
502-320		4.85–4.95	4.65–4.95
502-372		7.0–7.5	3.25–3.75

COPPER PINS (100 g/bottle)

Part No.	Type	% Carbon	% Sulfur
502-403		—	5.0–15.0

STEEL (100 g/bottle)

Part No.	Type	% Carbon	% Sulfur
502-348	Low C/S	0.0005–0.0015	0.0005–0.0015

STEEL (150 gram/bottle)

Part No.	Type	% Carbon	% Sulfur
501-987	Silicon	0.019	0.0090

IRON CHIP (454 g/bottle)

Part No.	Type	% Carbon	% Sulfur
501-673	Low C/S	0.0003–0.0015	0.0005–0.0040

IRON CHIP (40 g/bottle)

Part No.	Type	% Carbon	% Sulfur
501-981	Low C/S	0.0015	0.0012

CAST IRON (150 g/bottle)

Part No.	Std. No.	% Carbon	% Sulfur
501-937	LE-201	3.02	0.077
501-938	LE-202	3.04	0.052

CAST IRON (250 g/bottle)

Part No.	Type	% Carbon	% Sulfur
501-024	White Iron	3.25–3.40	0.040–0.080
501-105	Cast Iron	2.10–2.30	0.008–0.015
502-052	Pig Iron	3.75–4.00	0.050–0.100

TUNGSTEN CARBIDE (100 g/bottle)

Part No.	% Carbon
501-123	6.00–6.25

SWEDEN (JERNKONTORETS) (150 g/bottle)

Part No.	Std. No.	Type	% Carbon	% Sulfur
501-714	24	Low Alloy Steel	0.1744	0.0010
501-718	40	Low Alloy Steel	0.793	0.200

UNITED KINGDOM (BAS) (100 g/bottle)

Part No.	Std. No.	Type	% Carbon	% Sulfur
501-801	489-1	White Cast Iron	2.860	0.155

STEEL CHIP (50 g/bottle)

Part No.	Carbon/Sulfur/Nitrogen
502-402	30–60 ppm

IRON CHIP (50 g/bottle)

Part No.	Carbon/Sulfur/Nitrogen
502-401	<5 ppm

NOTE: Part numbers and standards' values may change.
Consult LECO for latest information.

United States:

Ph: 1-800-292-6141
Fax: 269-982-8977

Canada:

Ph: 1-800-268-0215
Fax: 905-564-6582

represented by:

Other Countries:

Ph: 269-983-5531
Fax: 269-983-3850

Created with

